



STARCRAFT CARAVANS

2017





FREEDOM COMES EASY IN A STARCRAFT CARAVAN

Whether you plan to explore Australia a month at a time, getaway to your favourite holiday spot on a regular basis, or set off on a lap with no fixed return date, your Jayco Starcraft Caravan will make you feel right at home every moment you're away.

You'll love the comfort, style and space, the long list of included features, and the freedom to choose from a variety of floor plans personalised to your taste, through the fabrics, finishes and accessories of your choice.

The practicality of your Jayco will also impress. You'll find everything works simply and intuitively, every surface cleans effortlessly, and every must-have and nice-to-have fits easily in the smart storage solutions that keep your belongings secure yet always at the ready.

The spacious interior is equipped for living and includes a fully featured kitchen, generous dining area, bathroom with shower and toilet as well as a double bed with an orthopaedic mattress. The Starcraft's design and features make living so easy, you might never want to go home again.



- 

NATIONWIDE SUPPORT
100+ SERVICE AND DEALER LOCATIONS
- +
- 

ROADSIDE ASSIST
3 YEARS
24 HOURS
365 DAYS
- +
- 

WARRANTY PROGRAM
12 MONTHS' COMPREHENSIVE COVERAGE
- +
- 

BETTER VALUE
MORE FEATURES FOR LESS
- +
- 

GREAT RESALE VALUE
A SMARTER INVESTMENT IN THE LONG RUN

THE AFFORDABLE STARCRAFT DELIVERS FREEDOM WITHOUT COMPROMISE

With prestigious features at an affordable price, the Jayco Starcraft is widely regarded as the best value-for-money package on the market and the right choice for first-time buyers of all ages.

The Jayco pedigree is evident all over, from the streamlined exterior to the Eurostyle furniture and quality appliances within. Outback versions of all seven floorplans are available for those with their heart set on reaching out-of-the-way destinations.

Inside, not a square centimetre has been overlooked. Zoned living affords ample room for dining and meal preparation, as well as space to stretch out and watch TV, listen to music or lose yourself in a great book.

Convenience abounds in the spacious kitchen and en suite bathroom with a large square shower recess, while generously bolstered seating and innerspring bedding add an extra touch of comfort.

With Jayco's 12-month warranty and exclusive support services, it's little wonder so many buyers considering a pre-loved caravan instead opt for a brand new Starcraft.

01/02 Spacious bedroom with ample storage space. **03** Plenty of wardrobe space. **04** The modern look vanity features a large basin and generous storage. **05** Spacious, modern look ensuite shower with exhaust fan. **06** Four burner gas cooktop with electric hotplate. **07** Large stainless steel bowl sink with Chop 'n' Serve board.



JAYCO OUTBACK

Some of Australia’s must-see destinations – the places you really want to explore – lie well beyond the bitumen. To help you see them, with all the comforts of home, each Jayco Starcraft Caravan is also available in an Outback version, complete with a higher ground clearance, and a range of high-strength componentry and specialised features, including:

- JTECH Independent Suspension
- 120W solar panel and regulator
- 150mm x 50mm rectangular hollow section chassis members
- 125mm x 50mm rectangular hollow section A-frame
- AL-KO off-road electric brake magnets
- AL-KO outback drop jacks
- Protective aluminium checker plate on sides
- 15-inch alloy wheels with 235/75R15 tyres
- Foldaway single step

- External 12V auxiliary plug
- External gas bayonet
- Jayco mud flaps
- Stoneguard protection (optional on Starcraft Caravans with extended A-frame)

Opting for a Jayco Outback version is not a licence to bush bash. But its extra strength and enhanced specifications will free you to travel the country’s unsealed roads safely and arrive relaxed. Even so, always take extra care and reduce your speed, especially when driving in unfamiliar territory. If in doubt, do what the 4WD experts do—use your Jayco as a base camp and head into rougher terrain without anything in tow.



Optional TL package shown

JTECH SUSPENSION

Purpose designed to complement the Jayco Endurance Chassis, JTECH Suspension replaces beam axles with individual stub axles, allowing each wheel to react independently to the road surface, while also lessening the chassis’ unsprung weight. Delivering greater stability, a smoother ride, more precise handling and increased ground clearance without increased ride height, it makes towing easier and safer than ever before.

Precision manufactured using automotive processes to ensure exact fitment, JTECH Suspension is the product of two years’ research and development at Jayco’s Melbourne headquarters, and countless kilometres of real world testing across the best and worst of Australian second class roads. Its features include:

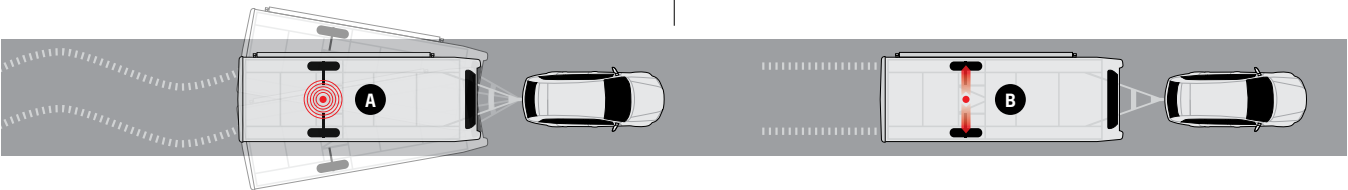
- Electrocoated surfaces for optimum protection against corrosion and stone chips
- AL-KO stub axles, bearings and brakes that are suitable for fitment of AL-KO Electronic Stability Control
- Large diameter, heavy-duty Pedders off-road shock absorbers and coil springs designed specifically for Jayco RVs and Australian conditions
- Aeon rubber springs inside each coil spring, producing a progressing rate when the suspension is compressed; and
- Toe-in and toe-out adjustment for wheel alignment



SAFETY FIRST, WITH AL-KO ELECTRONIC STABILITY CONTROL



- A** Critical swerve or sway is detected.
- B** Electronic Stability Control partially applies the RV brakes. The caravan is pulled into line behind the tow vehicle. The sway is stopped and the caravan brakes are released.



STRUCTURAL FRAME

Aluminium cladding (standard)

Starcraft models feature our quad-layer system, comprising internal wall ply and insulation, aluminium frame, external 3mm ply and external aluminium cladding. The result is a fully insulated side wall that is far superior.

Upgrade to the Tough Frame Leatherette (TL) Package

Jayco's multilayered, vacuum-bonded walls are both stronger than those of conventional 'stick & tin' timber frame and aluminium clad caravans, and offer greater thermal and acoustic insulation.

Jayco's leatherette interior trims offer all the benefits of leather without the price tag.

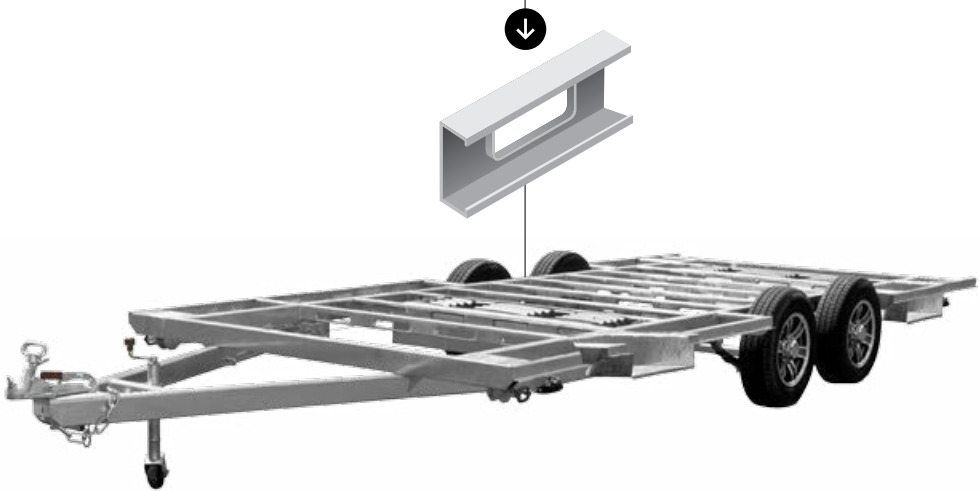


- 1 Aluminium external cladding with a high gloss finish
- 2 External 3mm plywood board to increase structural strength
- 3 Aluminium frame – not timber – for extra strength and longevity, plus galvanised plating for secure fitment of internal furniture
- 4 Internal high-density polystyrene foam for superior insulation
- 5 Internal 3mm plywood board CE coated for maximum durability

ENDURANCE CHASSIS

A Caravan is only as strong as the base on which it's built, so we build our Endurance Chassis to last like no other. Lightweight yet super strong, it's hot dip galvanised for lifelong protection against corrosion, and features PSC member floor support, which better resist bending and compression, while also safeguarding under floor wiring and plumbing.

Jayco Pressed Steel C-Section (Psc)
PSC floor members are lighter than conventional box section steel, 300% stronger and resist bending by 175%.



JAYCO OPTIONS
ADD THAT
PERSONAL TOUCH

It's through individual touches that the Jayco you choose becomes your own truly personal, home away from home. That's why we complement our range of feature-packed Starcraft floor plans with a selection of high quality optional extras – all of them designed to integrate seamlessly with your Jayco, operate effortlessly, and look fabulous. Should you need additional sleeping space from time to time, consider a bed converter, or an add-on room. If you like to entertain, an external slideout BBQ could be the go. While a bike rack is a must for those who like to explore destinations on two wheels.

- 01 Carry two full-sized bicycles with these lockable, easy load bike racks (select floor plans only)
- 02 Monitor water and battery levels with the Drifter LED control panel
- 03 With this high-gain Satellite Dish your favourite free-to-air TV shows can go wherever you do
- 04 Optional on touring models, the 120W solar system with regulator gives you power to spare
- 05 An external shower, including pop up shower tent, helps keep dirt and sand outside, where it belongs
- 06 Optional on most Starcraft models, the Sphere washing machine boasts a 3kg load capacity
- 07 With a slide out BBQ you can entertain while you cook (select models only)
- 08 This handy foldout table unclips in an instant to provide the extra table space you need
- 09 With Ezylevel take the guesswork out levelling and get it right the first time

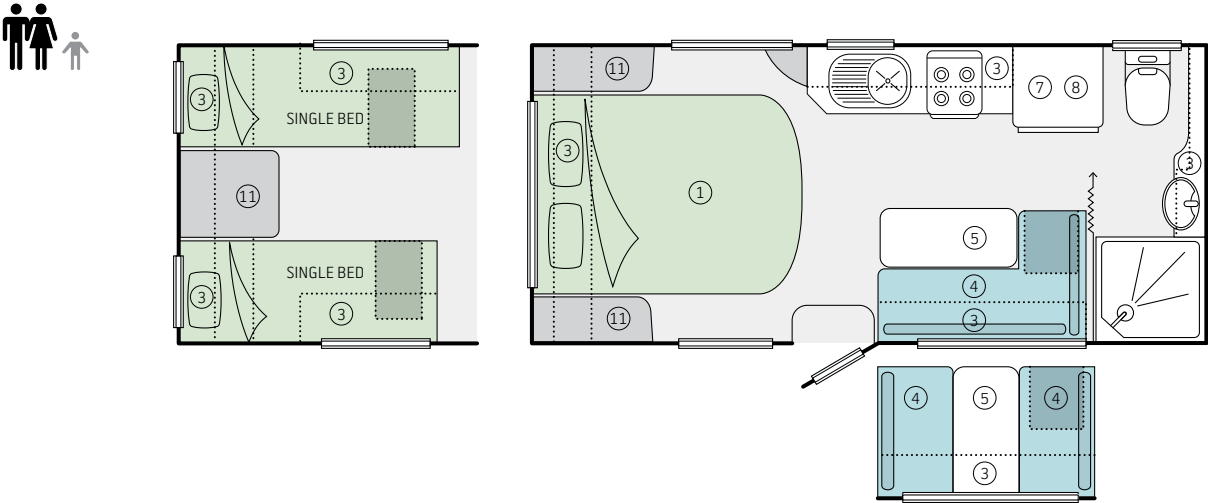


FLOOR PLANS

16 FT

16.51-3 SINGLE AXLE 08 OUTBACK

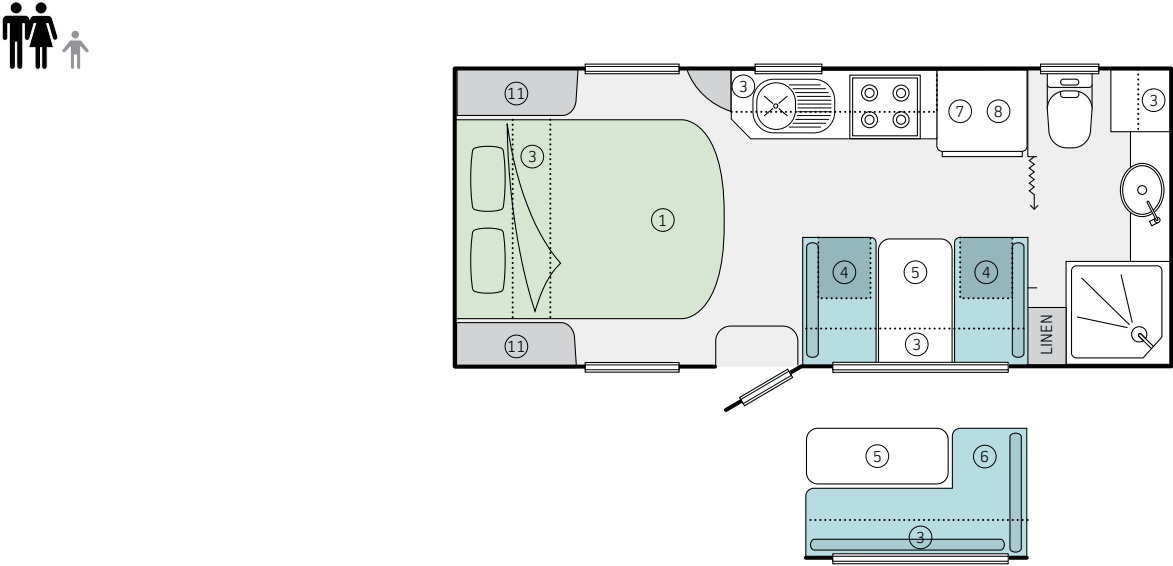
Body (L)	5,335	Tare weight (kg)	1,785	1,930
Width (inc awning)	2,470	Tow ball (kg)	185	190
Interior (L)	5,100	Travel length (mm)	6,758	6,868
Interior (H)	1,978	Travel height (mm)	2,895	3,040



18 FT

18.55-3 TANDEM AXLE 08 OUTBACK

Body (L)	5,635	Tare weight (kg)	1,945	2,200
Width (inc awning)	2,470	Tow ball (kg)	200	220
Interior (L)	5,405	Travel length (mm)	7,060	7,170
Interior (H)	1,978	Travel height (mm)	2,845	3,040

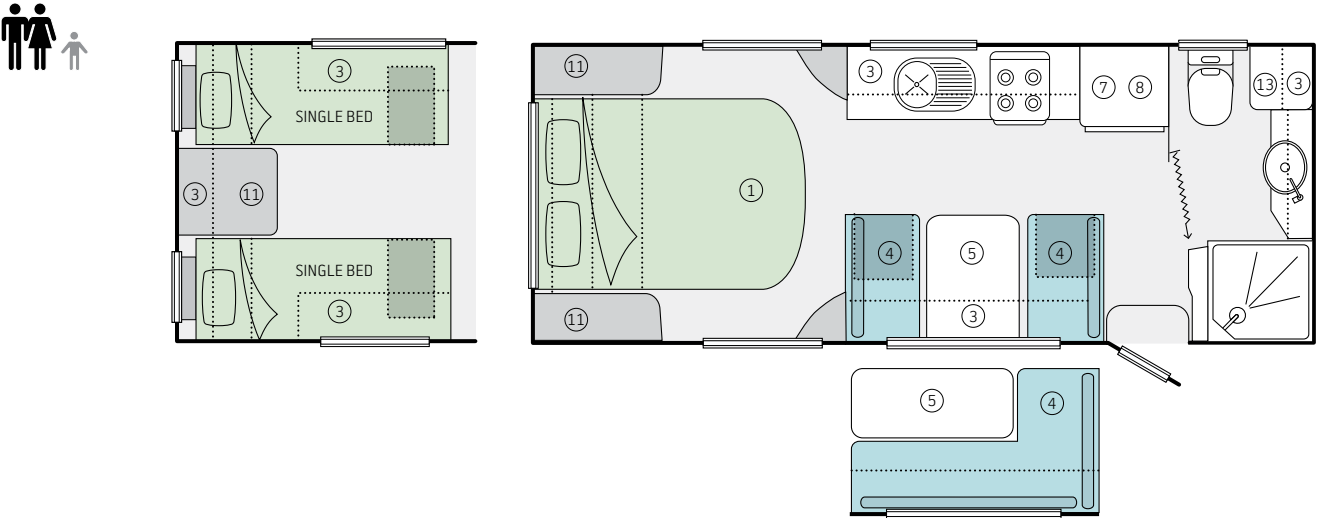


- Key**
- | | | | |
|----------------------------|----------------|----------------|--------------------------------|
| 1. Extending lift-up bed | 5. Table | 9. Pantry | 13. Washing machine (optional) |
| 2. Extending slide-out bed | 6. Club Lounge | 10. Storage | |
| 3. Overhead storage | 7. Microwave | 11. Robe | |
| 4. Seat | 8. Fridge | 12. Front boot | |

19 FT

19.61-2 TANDEM AXLE 08 OUTBACK

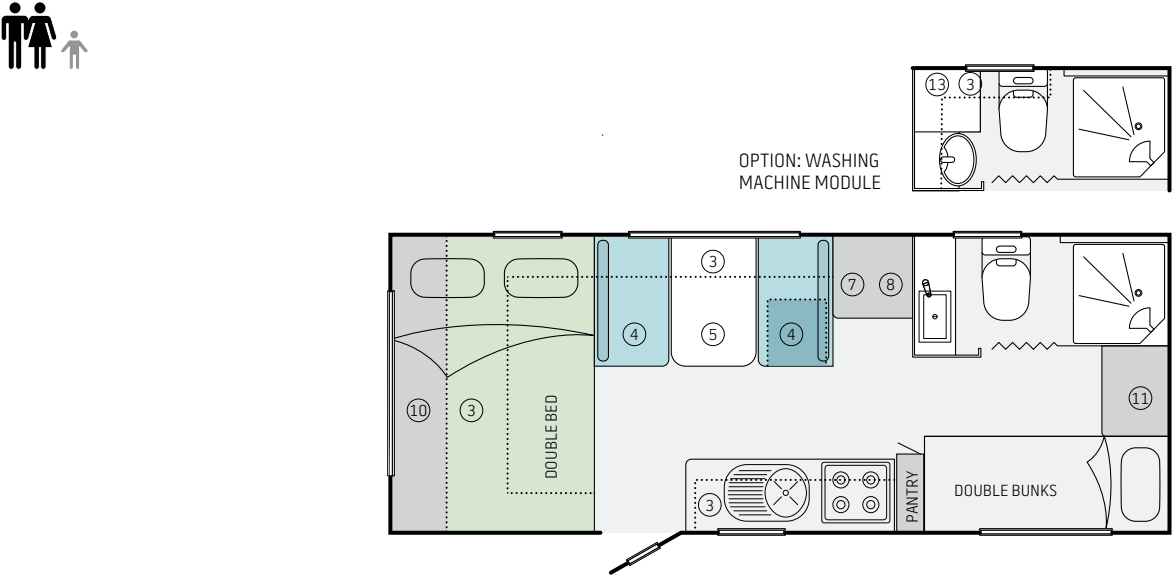
Body (L)	6,120	Tare weight (kg)	2,025	2,265
Width (inc awning)	2,470	Tow ball (kg)	160	175
Interior (L)	5,890	Travel length (mm)	7,545	7,655
Interior (H)	1,978	Travel height (mm)	2,845	3,040



19 FT

19.61-3 TANDEM AXLE 08 OUTBACK

Body (L)	6,120	Tare weight (kg)	2,036	2,275
Width (inc awning)	2,470	Tow ball (kg)	165	185
Interior (L)	5,890	Travel length (mm)	7,545	7,655
Interior (H)	1,978	Travel height (mm)	2,845	3,040



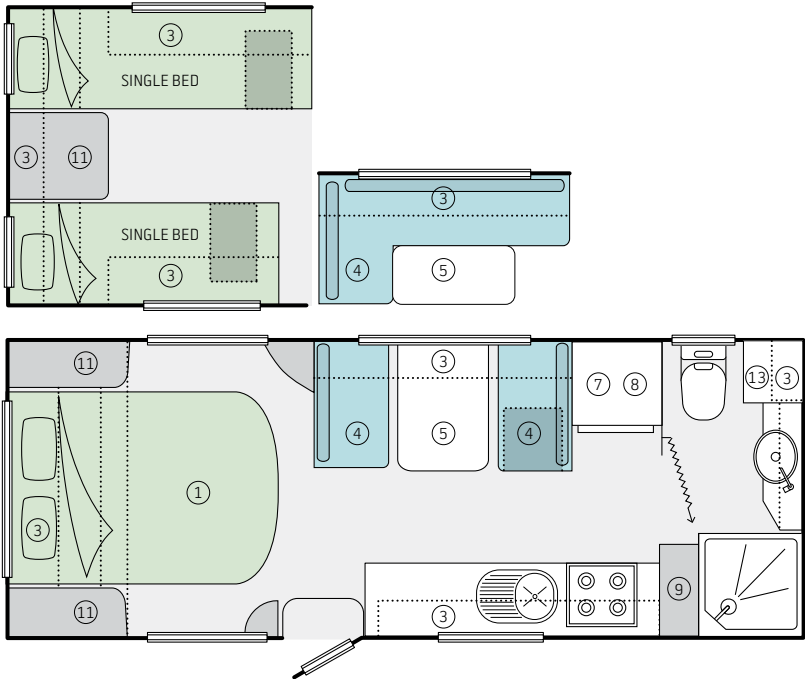
The tow ball and tare weights are only a guide and will change depending on accessories that are fitted to your van. It is advisable to discuss this with your Jayco Representative. Jayco allow an amount of additional weight (Carrying Load) for each individual unit manufactured above the initial manufactured Tare Weight of the unit. This approximate 'Carrying Load' is for the customers individual weight requirements and can be made up of 'any' additional weight they propose to load the unit with, e.g. water, food, clothes etc. The approximate standard unit carrying loads Jayco apply are; Single Axle, internal shower units 375kg—Tandem Axle, internal shower units 475kg.

FLOOR PLANS

20 FT

20.62-2 TANDEM AXLE 08 OUTBACK

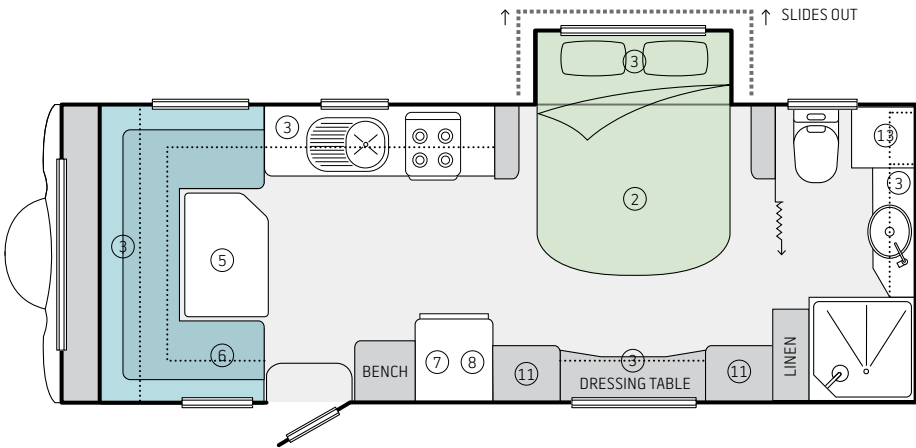
Body (L)	6,342	Tare weight (kg)	2,100	2,330
Width (inc awning)	2,470	Tow ball (kg)	155	175
Interior (L)	6,115	Travel length (mm)	7,765	7,875
Interior (H)	1,978	Travel height (mm)	2,845	3,040



21 FT

21.66-3 TANDEM AXLE 08 OUTBACK

Body (L)	6,780	Tare weight (kg)	2,285	2,520
Width (inc awning)	2,470	Tow ball (kg)	140	155
Interior (L)	6,270	Travel length (mm)	8,203	8,313
Interior (H)	1,978	Travel height (mm)	2,895	3,040

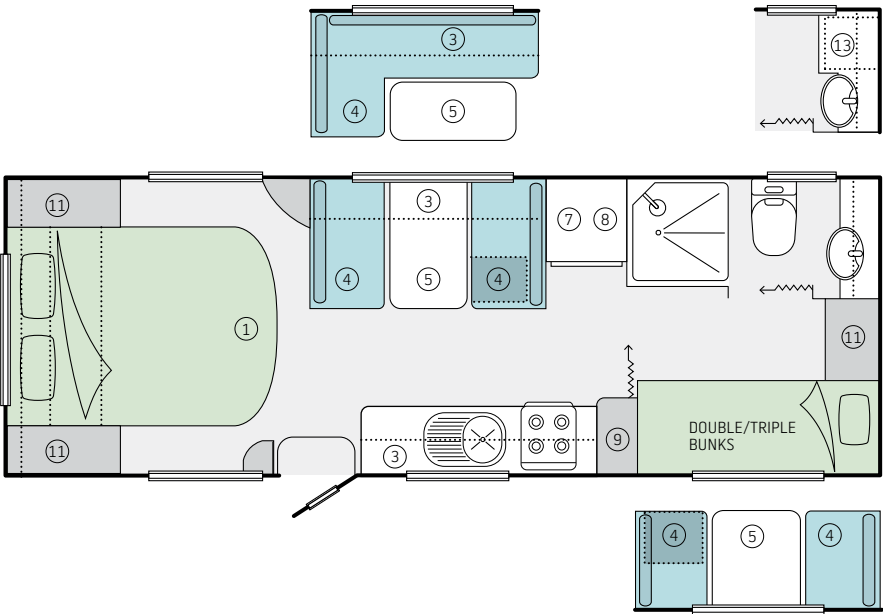


Key	1. Extending lift-up bed	4. Seat	7. Microwave	10. Storage	13. Washing machine (optional)
	2. Extending slide-out bed	5. Table	8. Fridge	11. Robe	
	3. Overhead storage	6. Club Lounge	9. Pantry	12. Front boot	

22 FT

22.68-1 TANDEM AXLE 08 OUTBACK

Body (L)	6890mm	Tare weight (kg)	2230	2505
Width (inc awning)	2470mm	Tow ball (kg)	170	195
Interior (L)	6755mm	Travel length (mm)	8313mm	8423mm
Interior (H)	1978mm	Travel height (mm)	2895mm	3040mm



The tow ball and tare weights are only a guide and will change depending on accessories that are fitted to your van. It is advisable to discuss this with your Jayco Representative. Jayco allow an amount of additional weight (Carrying Load) for each individual unit manufactured above the initial manufactured Tare Weight of the unit. This approximate 'Carrying Load' is for the customers individual weight requirements and can be made up of 'any' additional weight they propose to load the unit with, e.g. water, food, clothes etc. The approximate standard unit carrying loads Jayco apply are; Single Axle, internal shower units 375kg—Tandem Axle, internal shower units 475kg.

INTERIOR FEATURES

- Standard
- Optional
- Not available
- *

Selected layouts

	Touring	Outback
Battery – Setec 12V/240V management system	●	●
Battery – 100amp deep cycle gel	●	●
Bed converter (N/A L-shape)	○	○
Bed double 1490mm wide	●	●
Cabinet decor – Magnolia cupboard doors	○	○
Control panel – Coast to Coast	●	●
Control panel – Drifter LED display	○	○
Curtains – rubber backed removable & washable	●	●
Drawers (including large pot drawers) Ezi glide pullout	●	●
Floor vinyl – durable modern design	●	●
Hatch roof 400 x 400	●	●
Hatch roof 700 x 500*	○	○
Lights – ceiling 12V LED	●	●
Lights – reading 12V at bed	●	●
Lights – LED strip to underside of selected overheads	●	●
Locks – positive to cupboard doors	●	●
Pelmets – designer box	●	●
Point – 12V cig socket	●	●
Power – 240V	●	●
Privacy – concertina door	●	●
Shower – modern enclosed with exhaust fan	●	●
Sink – stainless steel large bowl with Chop 'n' Serve board	●	●
Slideout bed 12V electric* (21.66-3)	●	●
Splashbacks to kitchen area (N/A front kitchen)	●	●
Storage overheads	●	●
Storage under seats	●	●
Tap – mains pressure to sink	●	●
Towel rails to full ensuite	●	●
TV outlet	●	●
Vanity – modern design*	●	●
Water filtration system to sink	○	○
Windows – double glazed Euro push style with in built roller blinds	●	●
Appliances		
Air conditioning – roof mounted	●	●
Cooktop – 4 burner oven with 1 x 240V element	●	●
Fridge – Thetford 174L N3185	●	●
Hot water service – 22L dual gas/240v operation	●	●

EXTERIOR FEATURES

- Standard
- Optional
- Not available
- *

Selected layouts

	Touring	Outback
A-frame extended +300mm	○	○
Awning – Carefree rollout with LED strip light	●	●
Awning walls	○	○
BBQ – slideout*	○	○
Bike racks*	○	○
Boot – side entry with large storage & LED light	●	●
Bumper bar	●	-
Bumper bar – RHS galvanised	-	●
Checkerplate – protective black side bottom panels	-	●
Door – external trunk*	●	●
External entertainment unit*	○	○
Front & rear ABS smooth modern styling	●	●
Gas bayonet	○	●
Gas bottle cover	●	●
Gas bottles – fixed (2 x 9kg)	●	●
Jack –for spare wheel	●	●
Jacks – corner supports AL-KO drop	●	●
Light – LED annexe	●	●
Light – LED door handle	●	●
Mudflaps – Jayco	○	●
Pebbleguard stone protection at front	●	●
Plug car 12 pin	●	●
Power – 12V weather proof cig socket	○	●
Power – 240V weather proof outlet	●	●
Shower – external including pop up tent	○	○
Solar system – 120 watt and regulator	○	●
Solar system – 150 watt and regulator	○	○
Step – single pull out	-	●
Suspension – axle and leaf springs	●	-
Suspension – JTECH Suspension Independent Coil	○	●
Table – external foldout	○	○
Tap – mains pressure to A-frame	●	●
Water tank – 82L under floor x 2	●	●
Water tank – additional 82L*	○	○
Water tank guard	●	●

	Touring	Outback
Wheel – alloy spare	●	●
Wheel – cover for spare	●	●
Wheels – 16" 245/70R16	-	○
Wheels – alloy with radial tyres (Touring 14", Outback 15")	●	●
Wheels – nitrogen filled	●	●
Window shield – front with gas assisted struts	●	●
Safety		
Brake magnets -AL-KO offroad	-	●
Brakes – electric	●	●
Brake Unit – Tow Secure Emergency	●	●
Cooktop flame failure device	●	●
Door – external triple Lock with sep. security screen (Camec)	●	●
ESC – AL-KO Electronic Stability Control device	●	●
eZylevel (levelling device)	○	○
Fire extinguisher	●	●
Lights – side LED running	●	●
Water filler – lockable	●	●
Construction		
Chassis – Endurance hot dipped galvanised	●	●
Chassis – main members 4x 2" *	●	-
Chassis – main members 6 x 2" *	-	●
Furniture – Eurostyle with ali corner styles & seat framing	●	●
Roof – hail resistant one piece skin with insulation	●	●
Walls – fully insulated, aluminium frame & external Ali cladding	●	●

TRIMS

The freedom you’ll enjoy with your Jayco begins before you even place your order. We offer a wide range of great looking, hard-wearing, easy-to-clean finishes, fabrics and soft furnishings in both contemporary and classic styles, for you to choose and coordinate as you wish.

Curtains



Elvis P



Triumph Ash (optional)

Joinery/floor vinyl



Rovere joinery



Magnolia cupboard doors (optional)



Boston Dark floor vinyl

Benchtop/splashback



Furlo (optional)

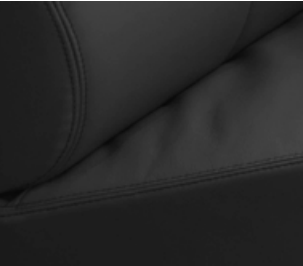


Talavera (optional)



Lucido Gloss splashback (standard)

Leatherette*



Black



Gray



Mink

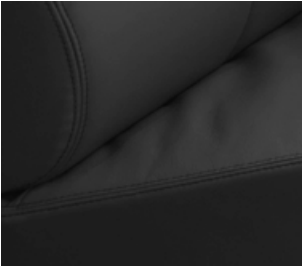


Orion



Sand Beige

Leather (optional)



Black



Gray



Mink



Orion



Sand Beige

Bolster/base cushion



Casablanca Dove /
Obsession Warm Haze



Thomas Eggplant / Aspire Eggplant



Eclipse / Bergen Noir



Bilson Granite / Byrne Granite



Palm Leaf Shark / Eternal Bungee



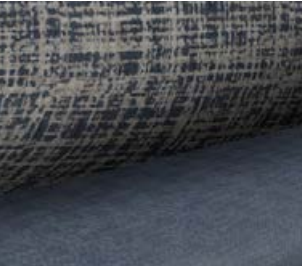
Kasual / Madrid



Arica / Zafira



Bubble / Eternal Bungee



Letto / Metro Slate



Jacob Indigo / Ardo Denim



Scura Natural / Eternal Bungee



Eternal Bungee / Eternal Bungee



Obsession Warm Haze /
Obsession Warm Haze



Aspire Eggplant / Aspire Eggplant

* Leatherette standard only on Starcraft TL (Toughframe Leatherette)
Supply of décor colours and continuity may vary at time of manufacture

BUILT IN AUSTRALIA SINCE 1975 AND STILL GOING STRONG

Jayco RVs have been helping Australians live their holiday dreams for over 40 years. We began in 1975, in the garage of a suburban home; our ambition, to build a better Camper Trailer. Today, Jayco is the most popular brand on the market. We've built, sold and supported more than 180,000 RVs to date, and now operate a 20-hectare manufacturing facility in Melbourne that employs a local workforce of 1,000+ people.

From that first Camper, Jayco has made high-quality products that offer outstanding value for money and lasting peace of mind. It's an advantage we deliver more than ever now through increased manufacturing efficiencies; proprietary technology, such as JTECH SUSPENSION, QUAD LAYER SYSTEM, JAYCO TOUGH FRAME (TL PACK) and JAYCO ENDURANCE CHASSIS; and a commitment to using better materials, more precise craftsmanship, and ever-smarter design ideas and construction methods, for example:

- Our unique aluminium framed furniture features **protective curved extrusions** for strength and elegance, positive cupboard catches to secure your valuables in transit, and cabinet fronts that are screwed into place, not stapled
- Cushions are made from **high-resilience** foam, for years of comfort and support, and upholstery is treated with **antimicrobial protection** to inhibit mould, mildew and fungi, as well as dust mite protection to help prevent asthma and allergy-related conditions
- Tyres are **inflated with nitrogen** – not everyday air – reducing fuel usage, tyre wear and the risk of blowouts, while also improving handling and safety

State of the art complex

Built in Australia since 1975 – and still going strong. In 2007, Jayco moved into its current 50-acre state of the art complex at 1 Jayco Drive, Dandenong South, Victoria, with a purpose-built 60,000sqm undercover manufacturing complex. This is where all Jayco RVs are made.

Australia's most recognised brand for quality and affordable recreational vehicles, Jayco is a great success story of Australian manufacturing.

Employing over 1,000 Australians, Jayco continues as a locally owned family business.



CHOOSE JAYCO AND YOU'LL NEVER LOOK BACK

The freedom you experience when purchasing a Jayco extends beyond being able to travel where you want, when you want, for however long you want. There's also freedom from worry.

It comes from realising you've chosen the best value RV brand that money can buy, and that it will hold value better, for longer. It's also the peace of mind of knowing Jayco will always be there for you – through our comprehensive warranty, complimentary roadside assist service, or the convenience of Australia's largest RV dealer network.

Freedom from doubt, from second-guessing, from 'what if' – it's the feeling only an Australian-made Jayco can provide, and it's why our RVs are the first and only choice for so many.



NATIONWIDE SUPPORT 100+ SERVICE AND DEALER LOCATIONS

With more than 100 approved service centres nationwide, the Jayco support network is easily the best and most comprehensive in Australia. No matter where the road takes you, the expertise or spare parts you need are never far away.



3 YEARS' ROADSIDE ASSIST 24 HOURS A DAY, 365 DAYS OF THE YEAR

Every new Jayco RV comes with one feature that no other RV manufacturer can match— complimentary 24-hour Roadside Assist for three full years. No matter where you travel in Australia, as a Jayco owner, you're only ever a phone call away from the help you need in the event of an on road emergency. Please refer to jayco.com.au for more information.



WARRANTY PROGRAM 12 MONTHS' COMPREHENSIVE COVERAGE

The Jayco 12-month warranty is our promise that the RV you purchase will be free from poor workmanship and material defects. Regarded as the industry benchmark, it lets you relax on your travels, safe in the knowledge that Australia's largest RV dealer and service network has you covered.



BETTER VALUE MORE FEATURES FOR LESS

Every model Jayco comes equipped with standard features that other brands offer only as options. Buying power is the key—nearly one in two RVs on Australian roads carries our name. We're also the nation's most efficient RV manufacturer. By passing on the benefits of these production advantages, we ensure Jayco remains Australia's best value for money RV.



GREAT RESALE VALUE A SMARTER INVESTMENT IN THE LONG RUN

As you travel life's journey your needs may change. Your growing family may outgrow your current RV. Or you may retire and want to upgrade before embarking on the big trip you've always dreamed about. Whatever your reason for selling, you'll find a Jayco holds its value.

JAYCO.COM.AU 1300 JAYCO RV



To be the best, you need to work with the best



VISIT YOUR JAYCO DEALER:

