

Caravans

2014 SILVERLINE AND STARCRAFT



FREEDOM COMES EASY
IN A JAYCO CARAVAN

Whether you plan to explore Australia a month at a time, getaway to your favourite holiday spot on a regular basis, or set off on a lap with no fixed return date, your Jayco Caravan will make you feel right at home every moment you're away.

You'll love the comfort, style and space, the long list of included features, and the freedom to choose from a variety of floor plans personalised to your taste, through the fabrics, finishes and accessories of your choice.

The practicality of your Jayco will also impress. You'll find everything works simply and intuitively, every surface cleans effortlessly, and every must-have and nice-to-have fits easily in the smart storage solutions that keep your belongings secure yet always at the ready.

And don't forget the other advantages of Jayco ownership – whether you opt for the new flagship **SILVERLINE** series, or the ever-affordable **STARCRAFT** range, you can look forward to:

- **nationwide support** from Australia's **largest dealer and service network**, comprising more than 100 locations around the country;
- **24-hour roadside assist*** for three years, ensuring you're only ever a phone call from the support you need; and a
- **comprehensive 12-month warranty** regarded as the industry benchmark.

Add up all the benefits, on this page and those that follow, and you'll start to see why Jayco RVs are rated number one for value; and why, just as importantly, they'll hold that value better than any other brand should you ever decide to upgrade.



*conditions apply



||
THE HARDEST THING
ABOUT THE ROAD NOT TAKEN
IS THAT YOU NEVER
KNOW WHERE IT MIGHT
HAVE LED
||

BAROSSA © SATC / Sven Kovac. inset: Cycling, CLARE VALLEY © SATC, SOUTH EAST WINERIES Tourism Australia / Adam Bruzzzone

NATIONWIDE SUPPORT

100+ SERVICE
AND DEALER
LOCATIONS



ROADSIDE ASSIST

3 YEARS
24 HOURS
365 DAYS



WARRANTY PROGRAM

12 MONTHS'
COMPREHENSIVE
COVERAGE



BETTER VALUE

MORE
FEATURES
FOR LESS



HIGHER RESALE VALUE

A SMARTER
INVESTMENT
IN THE
LONG RUN





SILVERLINE TURNS EVERY TRIP INTO A LUXURY HOLIDAY

You'll sense there's something special about the top-of-the-line Jayco Silverline from the instant you lay eyes on its sleek exterior. But only when you step inside is the beauty of this luxurious Caravan revealed in full.

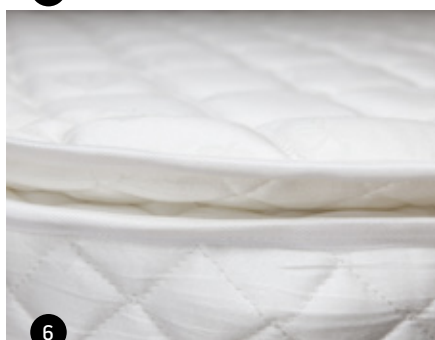
The sophisticated style, meticulously crafted joinery and upholstery, and comprehensive selection of quality appointments and appliances are remarkable. Nothing has been overlooked. Whether reading, sleeping, cooking or just kicking back in that extra large living area, your every moment will be spent relaxed in air-conditioned, five-star comfort.

The kitchen, for example, boasts generous workspace, and a full range of high-end appliances; the bathroom includes a new style vanity and square shower recess, plus a 3kg washing machine, while the living room complements a full range of entertainment equipment with super comfortable, deep cushion seating. All of it realised in your choice of sophisticated colour schemes with 13 trim options.

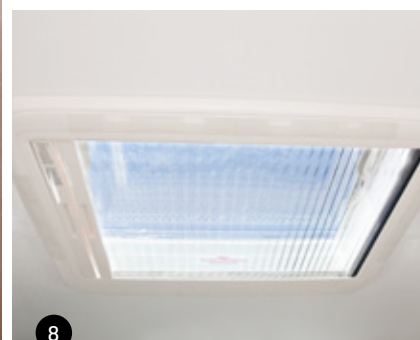
This new leader of the Jayco touring fleet is equally thorough when it comes to your on-road comfort and safety, with JTECH Suspension now joining Electronic Stability Control as a standard feature.

Silverline also offers you the luxury of choice. There are eight spacious floor plans to select from – including six with slide outs – all of which are available as Outback versions should wish to explore a little deeper into the countryside.

1 Catch your favourite shows on the 21" 12-volt LED TV with DVD player. **2** The CD/ Radio stereo system has indoor and outdoor speakers. **3** Monitor water and battery levels with the Drifter LED control panel. **4** Three-tier pull out pantry for all those essential ingredients. **5** 'Soft close' kitchen drawers operate at the touch of a finger. **6** Innerspring mattress with a pillow-top for maximum comfort. **7** Two-door fridge/ freezer with a massive 190-litre capacity. **8** Light up your day with the 700mmx500mm roof hatch. **9** Keep your cool throughout summer with the roof-mounted air conditioner. **10** Four-burner cooktop (three gas, one electric) with flame failure protection. **11** The large stainless steel sink includes a dual-sided chop 'n' serve board.

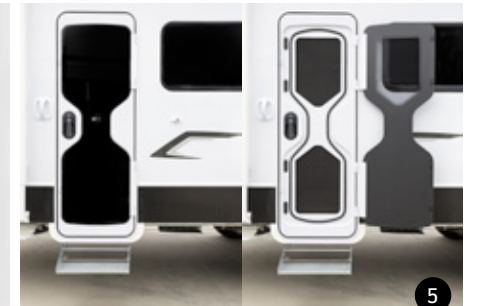
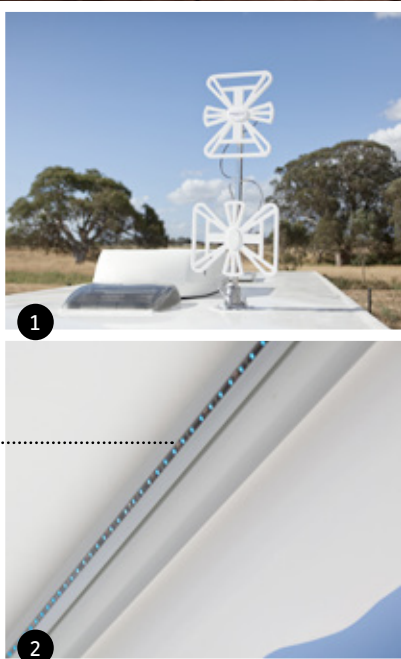


← ELECTRIC SLIDE-OUT BEDROOM



THE STYLISH SILVERLINE
OFFERS ALL THE COMFORTS
OF HOME, AND THEN SOME

Complete in every way, the spacious, multi-zoned Silverline surrounds you with the modern conveniences you expect in a luxury home, plus all your favourite creature comforts and holiday essentials.



1 12-volt powered TV aerial to optimise reception quality. **2** The rollout awning features integrated LED strip lighting. **3** Gas bottles are accessed externally via a convenient slide out tray. **4** Exterior badging is finished in distinctive raised chrome. **5** Triple-lock door with a separate security screen for maximum protection. **6** 120 watt solar system with regulator gives you power to spare. **7** The inbuilt washing machine boasts a 3kg load capacity. **8** Spacious, modern look en suite shower with an exhaust fan.

THE AFFORDABLE STARCRAFT DELIVERS
FREEDOM WITHOUT COMPROMISE

Offering prestige features without the premium price tag, the Jayco Starcraft has become the RV of choice for first-time Caravan buyers of all ages.

Regarded by many as the best value-for-money package on the market, its Jayco pedigree is obvious. You'll recognise it in the streamlined exterior; in the countless practical touches, inside and out; in the Eurostyle furnishings and quality appliances; and in the availability of Outback versions for each of Starcraft's six floor plans, allowing you to reach those harder to get to destinations.

It's little wonder people considering a pre-loved Caravan are instead opting for a new Starcraft, and benefiting fully from Jayco's 12-month warranty and other exclusive support services.

II
ENJOY THE LITTLE
THINGS BECAUSE ONE DAY
YOU WILL LOOK BACK
AND REALISE THEY WERE
THE BIG THINGS
II



NSW © Tourism Australia / Brian Geach. inset: Sand castles ROBE REGION © SATC, Fishing KANGAROO ISLAND © Tourism Australia / Adam Bruzzone

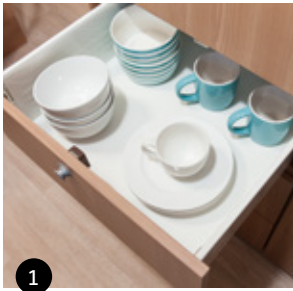


THE STARCRAFT INTERIOR
WILL SURPRISE AND DELIGHT

The Starcraft's stylish interior is incredibly space efficient; its zoned living creating ample room for dining, meal preparation, watching TV, listening to music or stretching out with your favourite page-turner.

Making use of every square centimetre, the Starcraft complements that versatility with heaps of storage, a full selection of top quality kitchen appliances, and an en suite bathroom complete with a full-sized, square shower recess.

With generously bolstered seating and innerspring bedding, the Starcraft also ensures your comfort – day and night.



1 Kitchen drawers operate at the touch of a finger. **2** The large stainless steel sink includes a dual-sided chop 'n' serve board. **3** Light up your day with the 400mmx400mm roof hatch. **4** The modern look vanity features a large basin and generous storage. **5** Eurostyle push out double-glazed windows with inbuilt roller blinds. **6** Fridge/freezer with a sizeable 150-litre capacity. **7** Catch your favourite shows on the 18.5" 12-volt LED TV with DVD player. **8** The comfortable orthopaedic beds lift up to create additional easy access storage. **9** Eurostyle furniture combines comfort, style and hard-wearing practicality. **10** Four-burner cooktop (three gas, one electric) with flame failure protection. **11** The CD/Radio stereo system has indoor and outdoor speakers. **12** Quiet and efficient twin fan 12-volt range hood with LED lighting.



BUILT IN AUSTRALIA SINCE 1975
AND STILL GOING STRONG

Jayco RVs have been helping Australians live their holiday dreams for almost 40 years. We began in 1975, in the garage of a suburban home; our ambition, to build a better Camper Trailer. Today, Jayco is the most popular brand on the market. We've built, sold and supported more than 160,000 RVs to date, and now operate a 20-hectare manufacturing facility in Melbourne that employs a local workforce of 800+ people.

From that first Camper, Jayco has made high-quality products that offer outstanding value for money and lasting peace of mind. It's an advantage we deliver more than ever now through increased manufacturing efficiencies; proprietary technology, such as **JTECH SUSPENSION**, the **JAYCO TOUGH FRAME** and **JAYCO ENDURANCE CHASSIS**; and a commitment to using better materials, more precise craftsmanship, and ever-smarter design ideas and construction methods, for example:

- Our Eurostyle aluminium framed furniture features **protective curved extrusions** for strength and elegance, positive cupboard catches to secure your valuables in transit, and cabinet fronts that are screwed into place, not stapled
- Cushions are made from **high-resilience** Dunlop™ foam, for years of comfort and support, and upholstery is treated with **antimicrobial protection** to inhibit mould, mildew and fungi, as well as dust mite protection to help prevent asthma and allergy-related conditions
- Tyres are **inflated with nitrogen** – not everyday air – reducing fuel usage, tyre wear and the risk of blowouts, while also improving ride and handling
- Silverline models feature Jayco's new **interlocking roof system** with extruded corners, which increases structural strength and stability, offers better insulation, provides superior wet weather performance and creates a cleaner, more streamlined appearance.



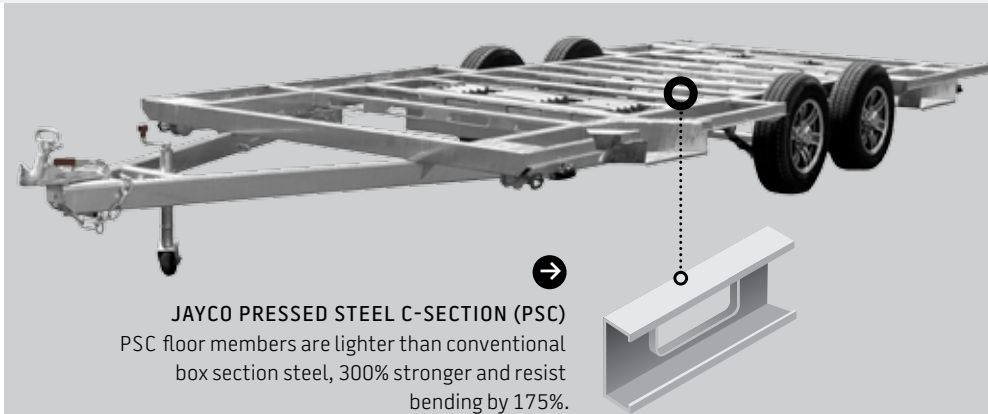
THE JAYCO TOUGH FRAME Jayco's multilayered, vacuum-bonded walls are both stronger than those of conventional 'timber & tin' aluminium clad caravans, and offer greater thermal and acoustic insulation.

Starcraft models feature our quad-layer system, comprising internal wall ply and insulation, aluminium frame, external 3mm ply and external aluminium cladding, while the range-topping Silverline models all boast the five-layer Jayco Tough Frame, as illustrated below.

1. **HAIL AND DENT RESISTANT, AERODYNAMIC FIBREGLASS EXTERIOR** with a high gloss finish
2. **EXTERNAL 3MM PLYWOOD BOARD** to increase structural strength
3. **ALUMINIUM FRAME** – not timber – for extra strength and longevity, plus galvanised plating for secure fitment of internal furniture
4. **INTERNAL HIGH-DENSITY POLYSTYRENE FOAM** for superior insulation
5. **INTERNAL 3MM PLYWOOD BOARD** CE coated for maximum durability



INTERLOCKING ROOF SYSTEM



JAYCO PRESSED STEEL C-SECTION (PSC)
PSC floor members are lighter than conventional box section steel, 300% stronger and resist bending by 175%.

JAYCO ENDURANCE CHASSIS
A Caravan is only as strong as the base on which it's built, so we build our Endurance Chassis to last like no other. Lightweight yet super strong, it's hot dip galvanised for lifelong protection against corrosion, and features PSC member floor support, which better resist bending and compression, while also safeguarding under floor wiring and plumbing.

JAYCO OUTBACK

Some of Australia's must-see destinations – the places you really want to explore – lie well beyond the bitumen. To help you see them, with all the comforts of home, each Jayco Silverline and Starcraft Caravan is also available in an Outback version, complete with a higher ground clearance, and a range of high-strength componentry and specialised features, including:

- JTECH Independent Suspension
- 120W solar panel and regulator
- 150mm x 50mm rectangular hollow section chassis members
- 125mm x 50mm rectangular hollow section A-frame
- Rectangular hollow section galvanised bumper bar
- AL-KO off-road electric brake magnets
- AL-KO outback drop jacks
- Protective aluminium checker plate on sides
- 16-inch alloy wheels with 245/70R16 tyres (Silverline only)
- 15-inch alloy wheels with 235/75R15 tyres (Starcraft only)
- Foldaway single step
- External 12V auxiliary plug
- External gas bayonet
- Jayco mud flaps
- External shower (Silverline only)
- A-frame tray (Silverline only)
- Optional stoneguard protection, adjustable front.

Opting for a Jayco Outback version is not a licence to bush bash, mind you. But its extra strength and enhanced specifications will free you to travel the country's unsealed roads safely and arrive relaxed. Even so, always take extra care and reduce your speed, especially when driving in unfamiliar territory. If in doubt, do what the 4WD experts do—use your Jayco as a base station and head into rougher terrain without anything in tow.

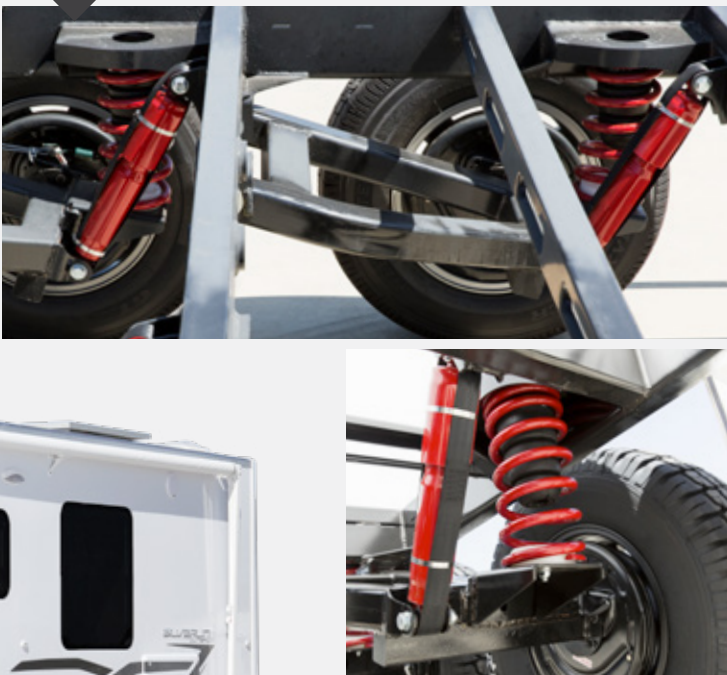


JTECH SUSPENSION

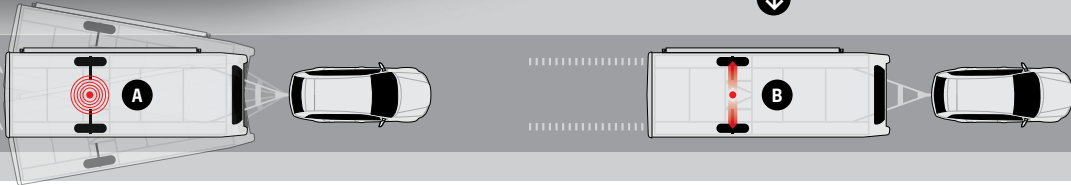
Purpose designed to complement the Jayco Endurance Chassis, JTECH Suspension replaces beam axles with individual stub axles, allowing each wheel to react independently to the road surface, while also lessening the chassis' unsprung weight. Delivering **greater stability**, a **smoother ride**, more **precise handling** and **increased ground clearance without increased ride height**, it makes towing easier and safer than ever before.

Precision manufactured using automotive processes to ensure exact fitment, JTECH Suspension is the product of two years' research and development at Jayco's Melbourne headquarters, and countless kilometres of real world testing across the best and worst of Australian second class roads. Its features include:

- **ELECTROCOATED** surfaces for optimum protection against corrosion and stone chips
- **AL-KO STUB AXLES**, bearings and brakes that are suitable for fitment of AL-KO Electronic Stability Control
- Large diameter, heavy-duty **PEDDERS OFF-ROAD SHOCK ABSORBERS AND COIL SPRINGS** designed specifically for Jayco RVs and Australian conditions
- **AEON RUBBER SPRINGS** inside each coil spring, producing a progressing rate when the suspension is compressed; and
- **TOE-IN AND TOE-OUT** adjustment for wheel alignment



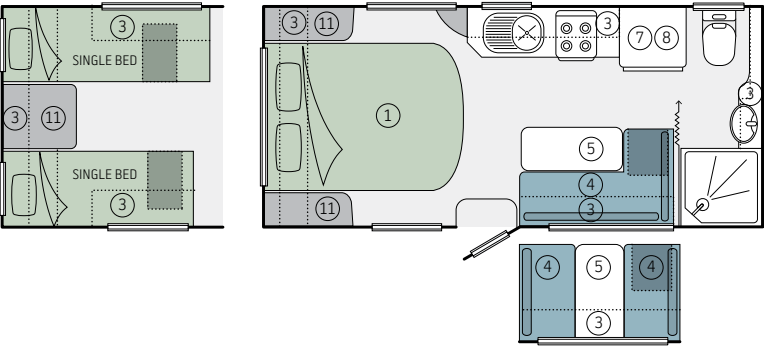
AL-KO ELECTRONIC STABILITY CONTROL
A. Critical swerve or sway is detected.
B. Electronic Stability Control partially applies the RV brakes. The caravan is pulled into line behind the tow vehicle. The sway is stopped and the caravan brakes are released.



| | | | | |
|-----------------|---------------|-------------------------|-------------------|-------------------|
| 16 FT STARCRAFT | BODY (L) 5335 | WIDTH (inc awning) 2470 | INTERIOR (L) 5100 | INTERIOR (H) 1978 |
|-----------------|---------------|-------------------------|-------------------|-------------------|

16.51-3 / 16.51-3 0B

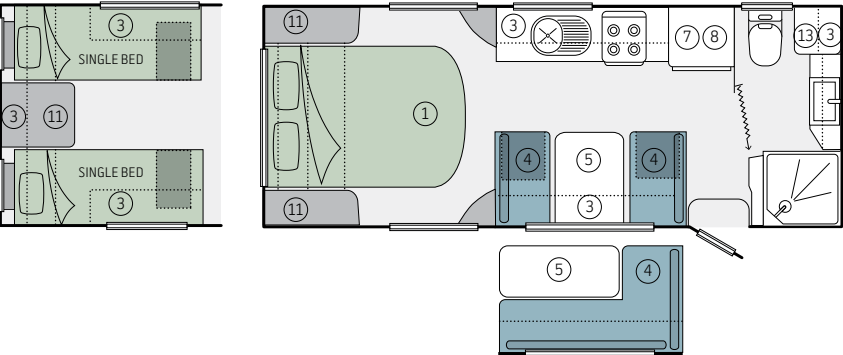
tare weight (kg) 1739 / 1920
tow ball (kg) 184 / 187
travel length (mm) 6758 / 6868
travel height (mm) 2895 / 2980



| | | | | |
|-----------------|---------------|-------------------------|-------------------|-------------------|
| 19 FT STARCRAFT | BODY (L) 6120 | WIDTH (inc awning) 2470 | INTERIOR (L) 5890 | INTERIOR (H) 1978 |
|-----------------|---------------|-------------------------|-------------------|-------------------|

19.61-2 / 19.61-2 0B

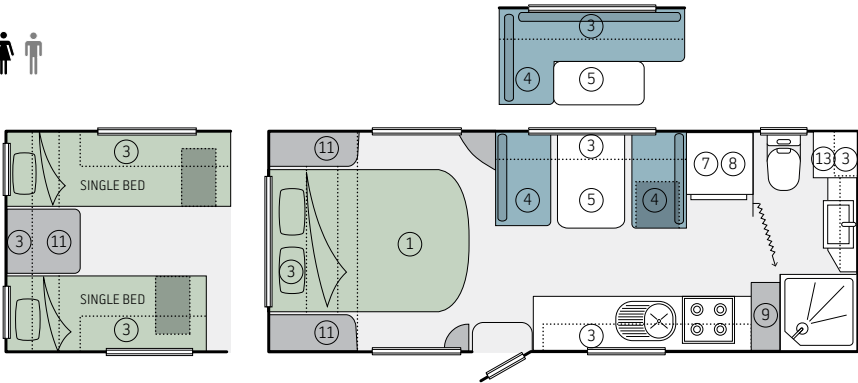
tare weight (kg) 2008 / 2205
tow ball (kg) 147 / 147
travel length (mm) 7545 / 7655
travel height (mm) 2845 / 2980



| | | | | |
|-----------------|---------------|-------------------------|-------------------|-------------------|
| 20 FT STARCRAFT | BODY (L) 6342 | WIDTH (inc awning) 2470 | INTERIOR (L) 6115 | INTERIOR (H) 1978 |
|-----------------|---------------|-------------------------|-------------------|-------------------|

20.62-2 / 20.62-2 0B

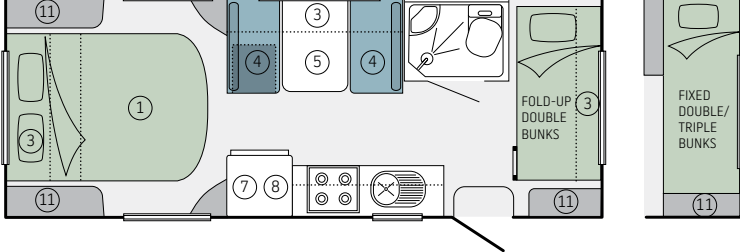
tare weight (kg) 2023 / 2200
tow ball (kg) 176 / 157
travel length (mm) 7765 / 7875
travel height (mm) 2845 / 2980



| | | | | |
|-----------------|---------------|-------------------------|-------------------|-------------------|
| 20 FT STARCRAFT | BODY (L) 6520 | WIDTH (inc awning) 2470 | INTERIOR (L) 6280 | INTERIOR (H) 1978 |
|-----------------|---------------|-------------------------|-------------------|-------------------|

20.62-3 / 20.62-3 0B

tare weight (kg) 2027 / 2210
tow ball (kg) 176 / 172
travel length (mm) 7945 / 8055
travel height (mm) 2845 / 2980



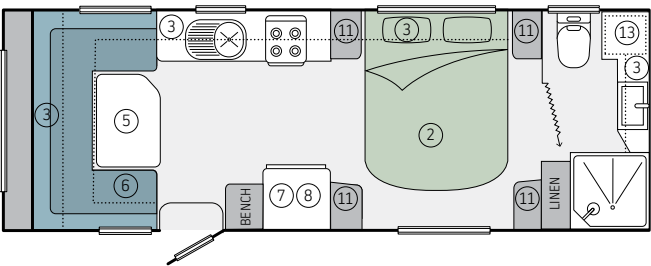
KEY

- 1 Extending lift-up bed
- 2 Extending slide-out bed
- 3 Overhead storage
- 4 Seat
- 5 Table
- 6 Club lounge
- 7 Microwave
- 8 Fridge
- 9 Pantry
- 10 Storage
- 11 Robe
- 12 Front boot
- 13 Washing machine (optional)

| | | | | |
|-----------------|---------------|-------------------------|-------------------|-------------------|
| 21 FT STARCRAFT | BODY (L) 6780 | WIDTH (inc awning) 2470 | INTERIOR (L) 6270 | INTERIOR (H) 1978 |
|-----------------|---------------|-------------------------|-------------------|-------------------|

21.66-3 / 21.66-3 0B

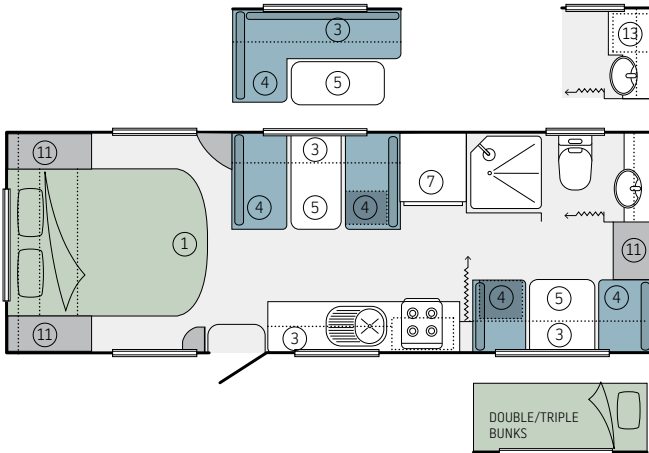
tare weight (kg) 2055 / 2240
tow ball (kg) 164 / 197
travel length (mm) 8203 / 8313
travel height (mm) 2895 / 3020



| | | | | |
|-----------------|---------------|-------------------------|-------------------|-------------------|
| 22 FT STARCRAFT | BODY (L) 6890 | WIDTH (inc awning) 2470 | INTERIOR (L) 6755 | INTERIOR (H) 1978 |
|-----------------|---------------|-------------------------|-------------------|-------------------|

22.68-1 / 22.68-1 0B

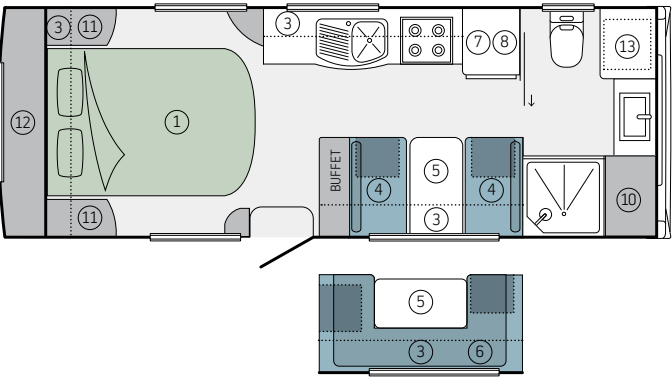
tare weight (kg) 2165 / 2315
tow ball (kg) 162 / 172
travel length (mm) 8313 / 8423
travel height (mm) 2895 / 3020



| | | | | |
|------------------|---------------|-------------------------|-------------------|-------------------|
| 21 FT SILVERLINE | BODY (L) 6760 | WIDTH (inc awning) 2470 | INTERIOR (L) 6034 | INTERIOR (H) 1978 |
|------------------|---------------|-------------------------|-------------------|-------------------|

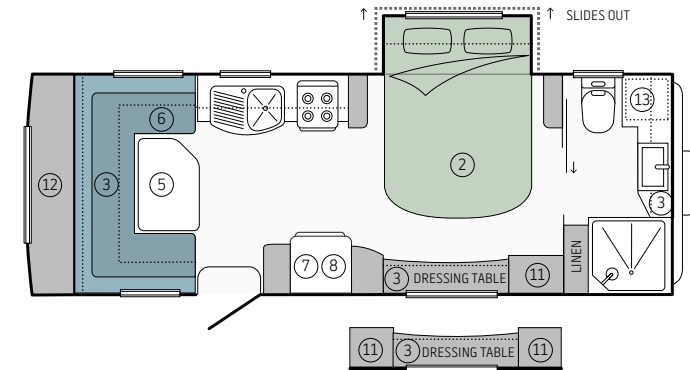
21.65-1 / 21.65-1 0B

tare weight (kg) 2385 / 2445
tow ball (kg) 250 / 220
travel length (mm) 8039 / 8039
travel height (mm) 2895 / 3030



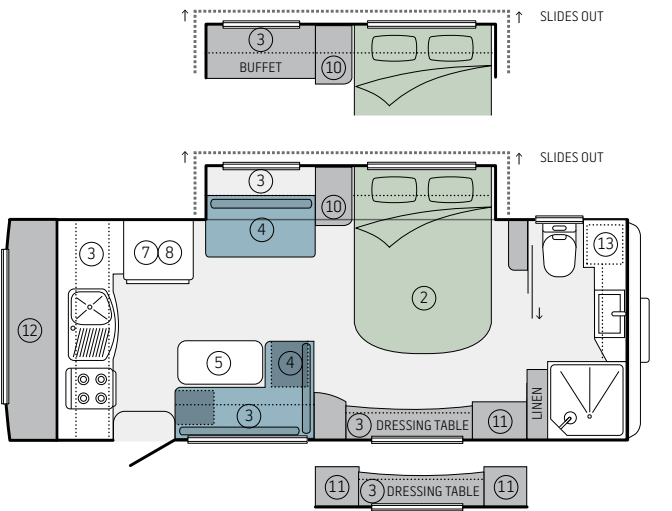
21.65-3 / 21.65-3 0B

tare weight (kg) 2427 / 2525
tow ball (kg) 222 / 195
travel length (mm) 8039 / 8039
travel height (mm) 2895 / 3030



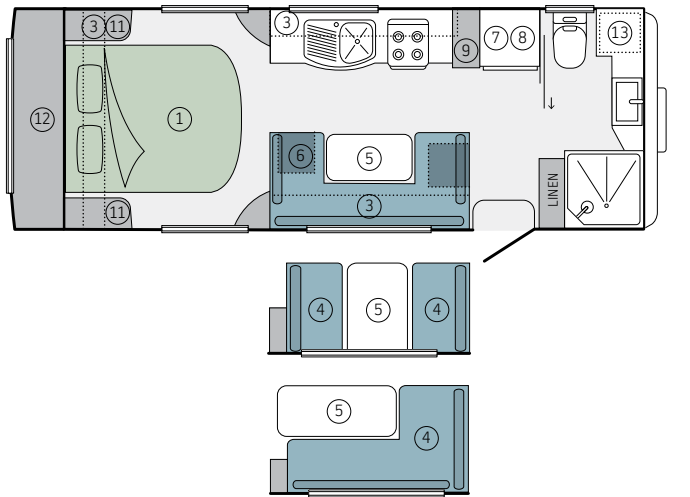
21.65-4 / 21.65-4 0B

tare weight (kg) 2540 / 2640
tow ball (kg) 240 / 210
travel length (mm) 8039 / 8039
travel height (mm) 2895 / 3030



21.65-7 / 21.65-7 0B

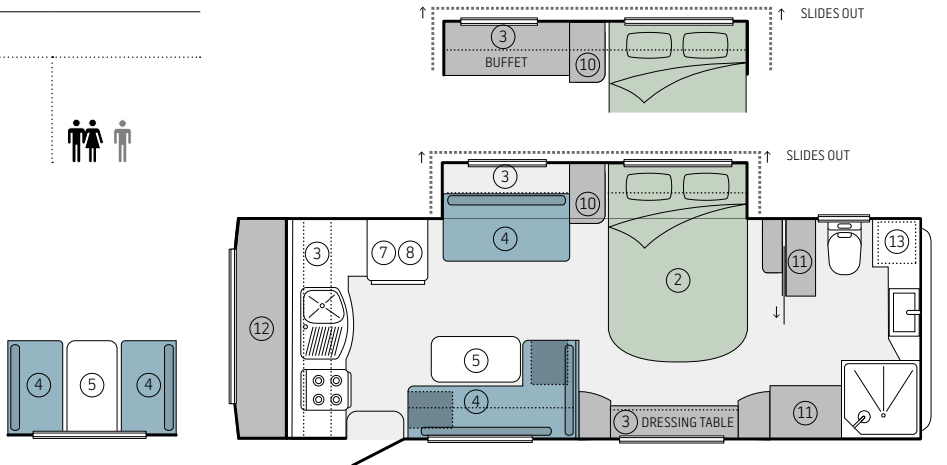
tare weight (kg) 2325 / 2390
tow ball (kg) 220 / 190
travel length (mm) 8039 / 8039
travel height (mm) 2895 / 3030



| | | | | |
|------------------|---------------|-------------------------|-------------------|-------------------|
| 23 FT SILVERLINE | BODY (L) 7305 | WIDTH (inc awning) 2470 | INTERIOR (L) 6578 | INTERIOR (H) 1978 |
|------------------|---------------|-------------------------|-------------------|-------------------|

23.72-1 / 23.72-1 0B

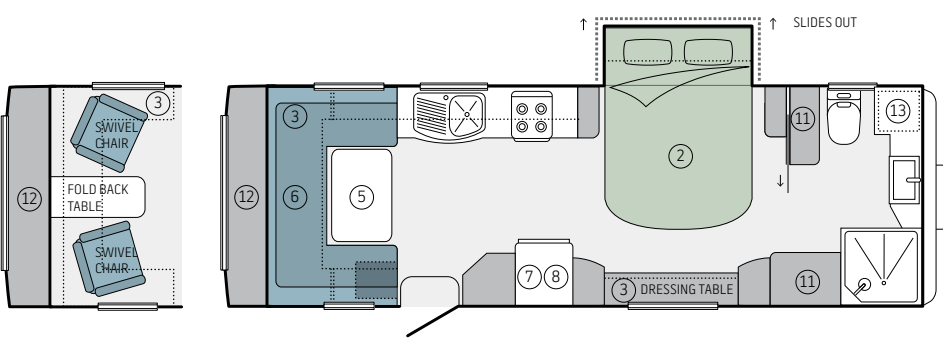
tare weight (kg) 2665 / 2720
tow ball (kg) 275 / 245
travel length (mm) 8585 / 8585
travel height (mm) 2895 / 3030



| | | | | |
|------------------|---------------|-------------------------|-------------------|-------------------|
| 24 FT SILVERLINE | BODY (L) 7520 | WIDTH (inc awning) 2470 | INTERIOR (L) 6780 | INTERIOR (H) 1978 |
|------------------|---------------|-------------------------|-------------------|-------------------|

24.75-2 / 24.75-2 0B

tare weight (kg) 2581 / 2754
tow ball (kg) 250 / 230
travel length (mm) 8795 / 8795
travel height (mm) 2895 / 3030



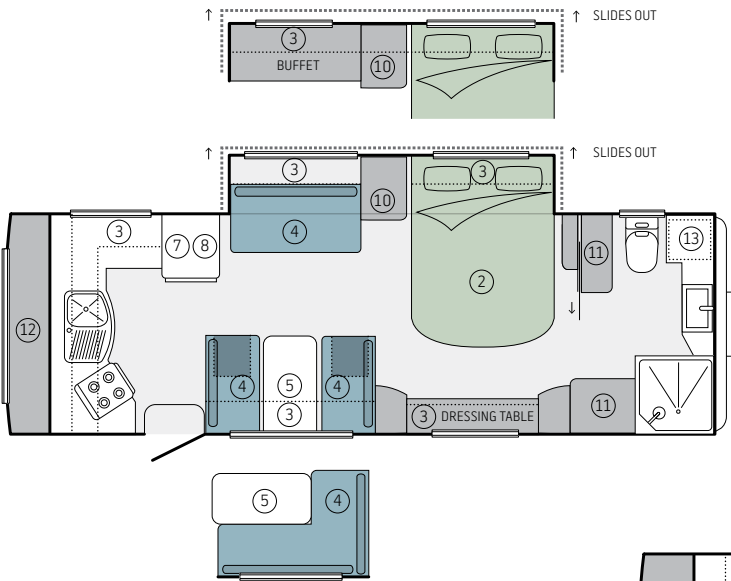
KEY

- 1 Extending lift-up bed
- 2 Extending slide-out bed
- 3 Overhead storage
- 4 Seat
- 5 Table
- 6 Club lounge
- 7 Microwave
- 8 Fridge
- 9 Pantry
- 10 Storage
- 11 Robe
- 12 Front boot
- 13 Washing machine

| | | | | |
|------------------|---------------|-------------------------|-------------------|-------------------|
| 25 FT SILVERLINE | BODY (L) 7750 | WIDTH (inc awning) 2470 | INTERIOR (L) 7025 | INTERIOR (H) 1978 |
|------------------|---------------|-------------------------|-------------------|-------------------|

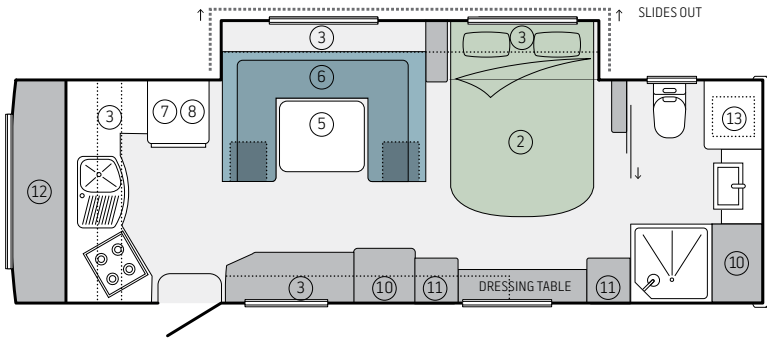
25.78-2 / 25.78-2 0B

tare weight (kg) 2745 / 2930
tow ball (kg) 245 / 215
travel length (mm) 9035 / 9035
travel height (mm) 2895 / 3030



25.78-5 / 25.78-5 0B

tare weight (kg) 2760 / 2960
tow ball (kg) 255 / 225
travel length (mm) 9035 / 9035
travel height (mm) 2895 / 3030



The tow ball and tare weights are only a guide and will change depending on accessories that are fitted to your van. It is advisable to discuss this with your Jayco Representative.

Jayco allow an amount of additional weight (Carrying Load) for each individual unit manufactured above the initial manufactured Tare Weight of the unit. This 'Carrying Load' is for the customers individual weight requirements and can be made up of 'any' additional weight they propose to load the unit up of. ie water, food, clothes etc.

The standard unit carrying loads Jayco apply are;
Single Axle, internal shower units 375kg
Tandem Axle, internal shower units 475kg

FEATURES

INTERIOR

| | Starcraft | Outback | Silverline | Outback |
|--|-----------|---------|------------|---------|
| Battery - Setec 12V/240V Management System | ● | ● | ● | ● |
| Battery - 100amp Deep Cycle | ● | ● | ● | ● |
| Bed Converter | ○ | ○ | ○ | ○ |
| Bed Double 1490mm wide | ● | ● | ● | ● |
| Control panel - Coast to Coast | ○ | ○ | - | - |
| Control panel - Drifter LED display | ○ | ○ | ● | ● |
| Curtains - Rubber backed removable & washable | ● | ● | ● | ● |
| Doors - O/Head curved 2 tone | - | - | ● | ● |
| Drawers (incl large pot drawers) Ezi glide pullout | ● | ● | - | - |
| Drawers (incl large pot drawers) Ezi glide pullout (soft close) | - | - | ● | ● |
| Floor Vinyl - Durable modern design | ● | ● | ● | ● |
| Hatch Roof 400 x 400 | ● | ● | ● | ● |
| Hatch Roof 700 x 500 | ○ | ○ | ● | ● |
| Lights - Ceiling 12V LED | ● | ● | ● | ● |
| Lights - Reading 12V at Bed | ● | ● | ● | ● |
| Lights - LED strip to underside of selected O/Heads | ● | ● | ● | ● |
| Locks - Positive to cupboard doors | ● | ● | ● | ● |
| Pantry - Lazy Susan* | - | - | ● | ● |
| Pantry - Pullout 3 Tier* | ● | ● | ● | ● |
| Pelmets - Designer box | ● | ● | ● | ● |
| Point - 12V Cig Socket | ● | ● | ● | ● |
| Power - 240V | ● | ● | ● | ● |
| Privacy Dividers (Ensuite) | ● | ● | ● | ● |
| Shower - Modern enclosed with exhaust fan | ● | ● | ● | ● |
| Sink - Stainless Steel Large bowl with Chop 'n' Serve Board | ● | ● | ● | ● |
| Slideout - Bed 12V Electric* | - | - | ● | ● |
| Slideout - 12V Electric* | - | - | ● | ● |
| Splashbacks to kitchen area (side kitchens only) | ● | ● | ● | ● |
| Storage O/Heads | ● | ● | ● | ● |
| Storage under seats | ● | ● | ● | ● |
| Tap Mains Pressure to sink | ● | ● | ● | ● |
| Towel Rails to full ensuite | ● | ● | ● | ● |
| TV outlet | ● | ● | ● | ● |
| Vanity - modern design | ● | ● | ● | ● |
| Water Filtration system to sink | ○ | ○ | ● | ● |
| Windows - Double Glazed Euro push style with in built roller blinds | ● | ● | ● | ● |
| Appliances | | | | |
| Air Conditioning - Roof Mounted | ● | ● | ● | ● |
| Cooktop - 4B0 with 1 x 240V element | ● | ● | ● | ● |
| Cooktop - Smev 4BG with 1 x 240V hotplate | - | - | ○ | ○ |
| Fridge - Dometic RMD8555 | - | - | ● | ● |
| Fridge - Dometic RM2555 | ○ | ○ | - | - |
| Fridge - Dometic RM2553 | ● | ● | - | - |
| Fridge - Dometic RM4601 | ○ | ○ | - | - |
| Hot Water Service - 22lt Dual Gas/240v Operation | ● | ● | ● | ● |
| Microwave | ● | ● | ● | ● |
| Rangehood - 12V LED with twin fans | ● | ● | ● | ● |
| Satellite - Sphere Dish | ○ | ○ | ○ | ○ |
| Stereo - Fusion CD/Radio System with external Speakers | ● | ● | ● | ● |
| Stereo - Fusion Premium CD/DVD/Radio System, External Speakers & App Functionality | ○ | ○ | ○ | ○ |
| TV Aerial - 12v power assisted | ● | ● | ● | ● |
| TV Sensor Pro | ○ | ○ | ● | ● |
| TV/DVD - Sphere LED 12V (Starcraft: 18.5" Silverline: 21") | ● | ● | ● | ● |
| Washing Machine - Sphere 3kg | ○ | ○ | ● | ● |
| Comfort | | | | |
| Bed Linen - Doona & Pillows | ● | ● | ● | ● |
| Beds - Liftup with Storage & Orthopaedic Slats (extending 150mm for D/Beds) | ● | ● | ● | ● |
| Dinette Seating in genuine designer leather | ○ | ○ | ● | ● |
| Dinette Seating with durable designer fabric | ● | ● | - | - |
| Mattress - Innersprings with Pillowtop | ● | ● | ● | ● |
| Seat Foam - Dunlop high resilience & antibacterial | ● | ● | ● | ● |

● Standard ○ Optional *Selected layouts

EXTERIOR

| | Starcraft | Outback | Silverline | Outback |
|---|-----------|---------|------------|---------|
| Awning - Carefree Rollout with LED Strip Light | ● | ● | ● | ● |
| Awning Walls | ○ | ○ | ○ | ○ |
| BBQ - Slideout* | ○ | ○ | ○ | ○ |
| Bike Racks* | ○ | ○ | ○ | ○ |
| Boot - Front with Large storage & gas strut assisted | - | - | ● | ● |
| Boot - Side entry with Large storage & LED Light | ● | ● | - | - |
| Bumper Bar | ● | - | ● | ● |
| Bumper Bar - RHS Galvanised | - | ● | - | - |
| Checkerplate -Protective black side bottom panels | - | ● | - | ● |
| Door - External trunk* | ● | ● | ● | ● |
| External Entertainment Unit | ○ | ○ | ○ | ○ |
| Front & Rear ABS Smooth Modern Styling | ● | ● | - | - |
| Front & Rear F/Glass Smooth Modern Styling | - | - | ● | ● |
| Gas Bayonet | ○ | ● | ● | ● |
| Gas Bottle Cover | ● | ● | - | - |
| Gas Bottles - Fixed (2 x 9kg on internal shower models) | ● | ● | - | - |
| Gas Bottles - Slideout (2 x 9kg) | - | - | ● | ● |
| Jack - For Spare Wheel | ● | ● | ● | ● |
| Jacks - Cnr Supports AL-KO drop | ● | ● | ● | ● |
| Jockey Wheel to centre of A-Frame | - | - | ● | ● |
| Light - LED Annexe | ● | ● | ● | ● |
| Light - LED Door handle | ● | ● | ● | ● |
| Mudflaps - Jayco | - | ● | ● | ● |
| Pebbleguard Stone protection at front | ● | ● | ● | ● |
| Plug Car 12 Pin | ● | ● | ● | ● |
| Power - 12V Weather Proof Cig Socket | ○ | ● | ● | ● |
| Power - 240V Weather Proof Outlet (double on Silverline) | ● | ● | ● | ● |
| Shower - External | ○ | ○ | ○ | ● |
| Solar System - 120 watt and regulator | ○ | ● | ● | ● |
| Step - Single pull out | - | ● | - | ● |
| Stoneguard - Front adjustable protection | - | ○ | - | ○ |
| Suspension - Axle and Leaf Springs | ● | - | - | - |
| Suspension - JTECH Suspension Independent Coil | ○ | ● | ● | ● |
| Table - External foldout | ○ | ○ | ● | ● |
| Tap - Mains pressure to Aframe | ● | ● | ● | ● |
| Water Tank - 82Lt under floor x 2 | ● | ● | ● | ● |
| Water Tank - Additional 82Lt | ○ | ○ | ○ | ○ |
| Water Tank Guard | ● | ● | ● | ● |
| Wheel - Alloy Spare | ● | ● | ● | ● |
| Wheel - Cover for Spare | ● | ● | ● | - |
| Wheels - 16" 245/70R16 | - | ○ | - | ● |
| Wheels - Alloy with radial tyres (inches)* | 14 | 15 | 15 | 16 |
| Wheels - Nitrogen filled | ● | ● | ● | ● |
| Window Shield - Front with gas assisted struts | ● | ● | ● | ● |
| Safety | | | | |
| Brake magnets -AL-KO offroad | - | ● | - | ● |
| Brakes - Electric | ● | ● | ● | ● |
| Brake Unit - Tow Secure Emergency | ● | ● | ● | ● |
| Cooktop Flame Failure device | ● | ● | ● | ● |
| Door - External triple Lock with sep. security screen (Camec) | ● | ● | - | - |
| Door - External triple Lock with sep. security screen (Dometic) | - | - | ● | ● |
| ESC -AL-KO Electronic Stability Control device | ● | ● | ● | ● |
| Fire extinguisher | ● | ● | ● | ● |
| Lights - Side LED Running | ● | ● | ● | ● |
| Water Filler - Lockable | ● | ● | ● | ● |
| Construction | | | | |
| Chassis - Endurance Hot Dipped Galvanised | ● | ● | ● | ● |
| Chassis - Main Members 4" x 2" (16"-19" on Starcraft) | ● | ● | - | - |
| Chassis - Main Members 6" x 2" (20"-22" on Starcraft) | ● | ● | ● | ● |
| Furniture - Eurostyle with ali cnr styles & seat framing | ● | ● | ● | ● |
| Roof - Hail resistant one piece skin with insulation | ● | ● | - | - |
| Roof - Hail resistant one piece skin in Sandwich construction | - | - | ● | ● |
| Walls - Fully insulated, aluminium frame & external cladding | ● | ● | - | - |
| Walls - Fully insulated Toughframe, hail & dent resistant | - | - | ● | ● |

JAYCO OPTIONS

ADD THAT PERSONAL TOUCH It’s through individual touches that the Jayco you choose becomes your own truly personal, home away from home. That’s why we complement our range of feature-packed Silverline and Starcraft floor plans, with a selection of high quality optional extras – all of them designed to integrate seamlessly with your Jayco, operate effortlessly, and look fabulous.

Should you need additional sleeping space from time to time, consider a bed converter, or an add-on room. If you like to entertain, an external slideout BBQ could be the go. While a bike rack is a must for those who like to explore destinations on two wheels.

- 01 Carry two full-sized bicycles with these lockable, easy load bike racks.
- 02 120W solar system with regulator takes advantage of the solar provision included as standard on Starcraft touring models.
- 03 Optional on all Starcraft models, the Coast control panel lets you check water and battery levels at a glance.
- 04 An external shower helps keep dirt and sand outside, where it belongs.

- 05 Optional on Silverline Outback models, a protective stone guard will help keep your Jayco looking like new.
- 06 Optional on all Starcraft models, the Sphere washing machine boasts a 3kg load capacity.
- 07 With this high-gain Satellite Dish your favourite free-to-air TV shows can go wherever you do.
- 08 Optional on all Starcraft models, this handy foldout unclips in an instant to provide the extra table space you need.



TRIMS

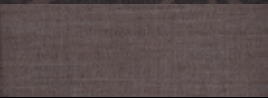
FREEDOM OF CHOICE The freedom you'll enjoy with your Jayco begins before you even place your order. We offer a wide range of great looking, hard-wearing, easy-to-clean finishes, fabrics and soft furnishings in both contemporary and classic styles, for you to choose and coordinate as you wish.



Thorpe / Cadel Charcoal



Basel / Cadel Deepsea



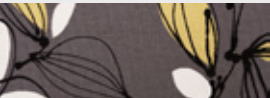
Chullo Shadow / Kicker Pewter



Wavernet / Cadel Deepsea



Network Berry / Landmark Crimson



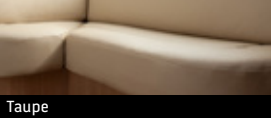
Belair Graphite / Keylargo Pebble



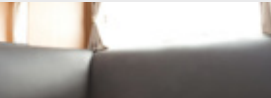
Neo Taupe / Bella Desert



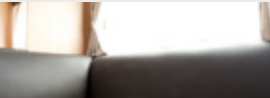
Java Smoke / Metro Charcoal



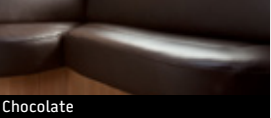
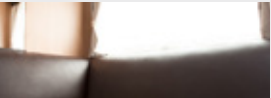
Taupe



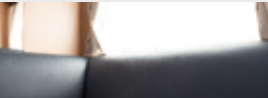
Sand Beige



Black Sauve



Chocolate

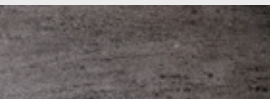


Blue Sea

Leather standard on Silverline and optional on Starcraft



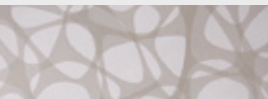
Amara Matte



Cherso



Cristal



Lucido (Silverline)

BOLSTER CUSHION

BASE CUSHION

BOLSTER CUSHION

BASE CUSHION

LEATHER

LAMINEX

PROUDLY SUPPORTING THE PURSUIT OF GOOD HEALTH Across four decades, Jayco has passionately supported community health initiatives, charities, sports and sporting teams. Our commitment to contribute to those in need, promote the benefits of an active lifestyle, and assist sports people achieve their potential – be it at elite level or grass roots – remains undiminished. Below are just a few ways we're helping make a difference today. For more, visit jayco.com.au.



THE ONE LIFE, ONE CHANCE AUSSIE ROADTRIP
In 2013, triple Olympian Lisa Curry hit the road and took the fight against obesity directly to the people of regional and rural Australia.



MS TREK Cricketing legends and celebrities travelled from Melbourne to Sydney to raise awareness and funds for people living with Multiple Sclerosis – and Jayco was with them all the way.



Simon Peters Photography

WOMEN'S NATIONAL BASKETBALL Long time supporters of women's basketball, Jayco is now naming rights sponsor for the Opals, the Emerging Opals, the Under-19 Gems and Under-17 girls' national teams.



WOMEN'S CYCLING The JAYCO-AIS Women's Endurance Squad is a pathway to the AIS professional women's cycling team, and also helps national track athletes prepare for road racing.

TO BE THE BEST, you need to work with the best



JAYCO.COM.AU 1300 JAYCO RV

CONNECT



Visit your Jayco Dealer:

cover inset images: left ADELAIDE HILLS © SATC / Adam Bruzzone right BAROSSA © SATC / Randy Larcombe

Jayco Corporation owns the copyright in this Brochure. Unauthorised use, reproduction or adaption is forbidden and will be prosecuted. Due to ongoing improvement, the specifications in this brochure are subject to change without notice. ©JAYCO 2014 PO Box 636 Dandenong VIC Australia 3175. JAY198_0314